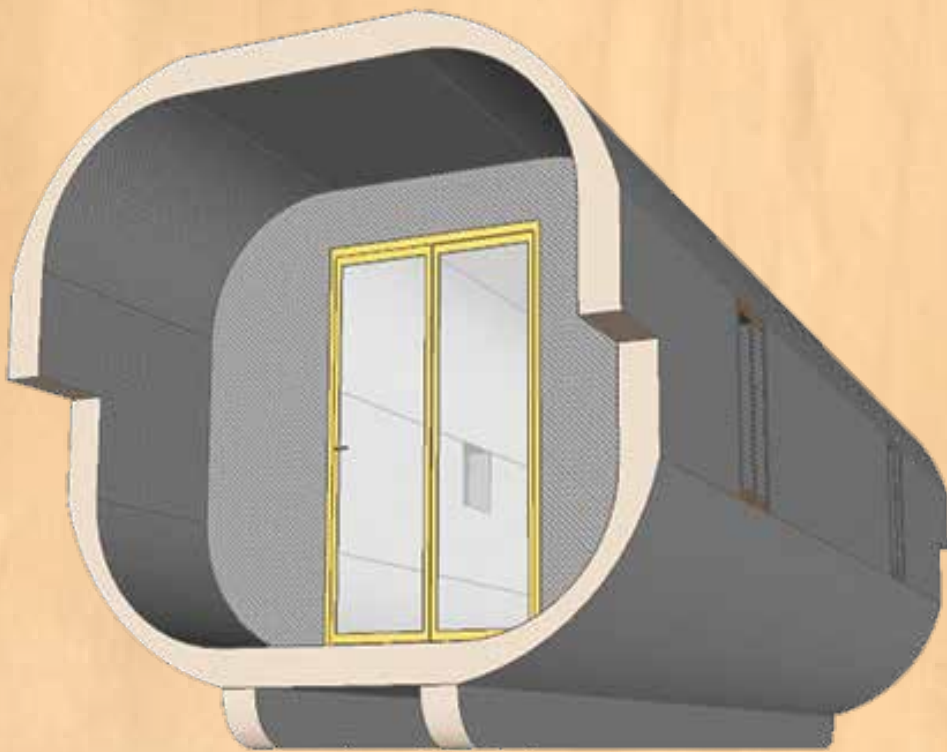


PROCÉDÉ CONSTRUCTIF NEWOOD®

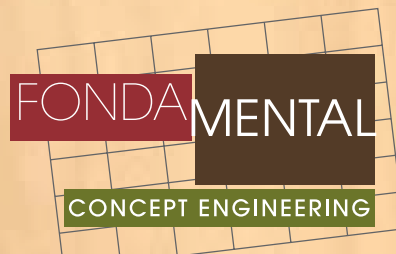
**TEMPORARY
AND
EMERGENCY HOUSING**



The Newwood Building System® is a Fundamental concept.

THE NEWOOD BUILDING SYSTEM[®]

is a Fondamental concept



FONDAMENTAL - L'INGÉNIERIE DES CONCEPTS

38, rue Pierre Sémard
F - 34200 Sète.

Contact :

Willem A. van Willigen

Gérant

Tél. : 33+(0)4 99 02 56 69

GSM : 33+(0)6 84 78 52 66

[e] : willigenvw@gmail.com

Sarl registered at the RCS Montpellier

Nr 524 159 159 00010

Code APE 7022z

This document describes in detail a project which has been put together as a result of much original research and consideration on the part of its creators. This document remains confidential and is disclosed only for the purpose of considerations of this project in cooperation with its creators. The rights of confidentiality in this document and in the project remain with its creators as do also other intellectual property rights in the document and its contents.

© Fondamental - Ingénierie des Concepts - V. 14 - 01

■ Summary

- **Introduction** 4
- **Newood, temporary and emergency housing** 5
- **Newood Standard housing containers** 6
- **Standard layout** 7
- **Newood Extensible housing containers**
Newood housing containers «Cabin» type
Newood housing containers «DeLuxe» type 8

■ INTRODUCTION

The Newood Building System (NBS) is based on a **composite building material** including an expanded polystyrene heart (of variable thicknesses from 0.20 to 1.25 m) bonded to plywood or OSB «skins» with one component polyurethane bonds with weight of **50 kilos per cubic meter** (see the Newood Building System, an introduction).

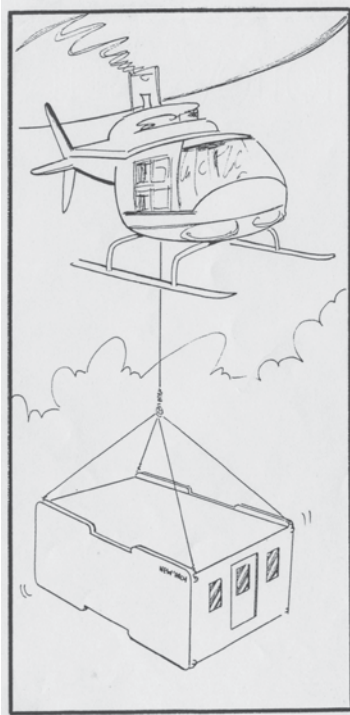
The Newood material allows the construction of sandwich hulls of an exceptional mechanical resistance, **without wood skeletons or frameworks** in flat or curved forms, hyperbolic parabolas as well as circular and elliptic domes **with insulation values never yet reached before**.

Paramount qualities of the PCN lie in its constructive homogeneity, the very high values of insulation, the formability of its material and the speed of the productions and in situ assemblies. **Qualities which apply particularly to temporary and emergency housing.**

■ NEWOOD TEMPORARY AND EMERGENCY HOUSING

The temporary and emergency housing belongs to the category of housing containers.

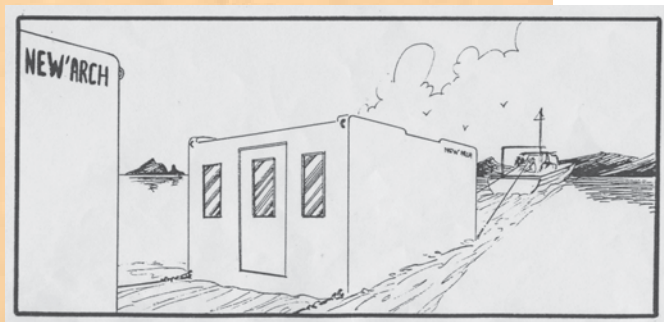
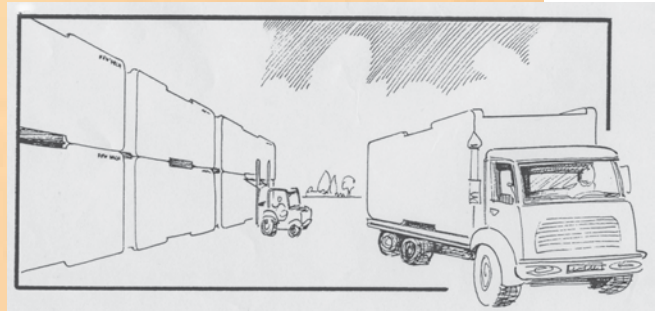
The Newood housing containers address to the situations of instant short or long needs under all latitudes. On demand they can be equipped to function in energy autonomy.



The Newood containers can be :

- transported by road (dimensions adaptable),
- by air transport (lightness),
- and
- on water (flotation).

In all the cases they are dimensioned according to the regulations in force.



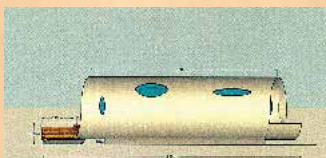
We propose four types of housing containers :

- les Conteneurs Newood Standard,



- les Conteneurs Newood Extensibles,

- les Conteneurs Newood Carlingue, et



- les Conteneurs Newood DeLuxe.

The Newood Standard housing containers

are built according to the shape of a rectangular tube of a 3 meters broad base and a 3.50 m height. The thicknesses of the grounds, the walls and the roofs will be of 20 cm for a value R of insulation of 5.2. For a 6 m length container, that gives a net living area of 18 m².



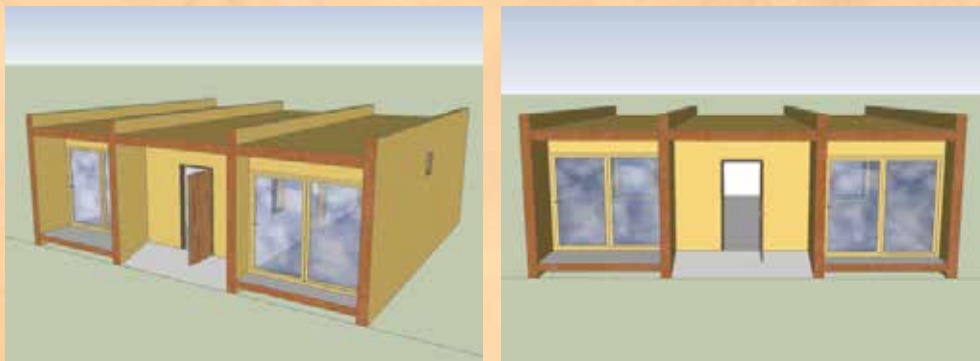
Other Standard models



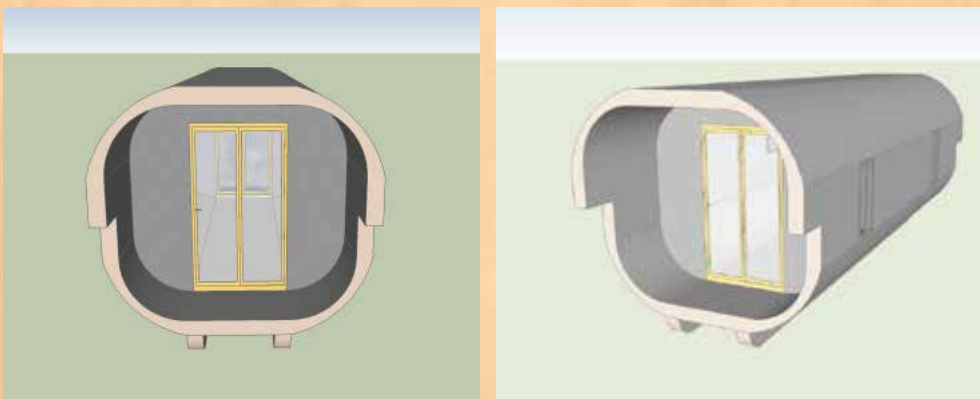
Standard layout



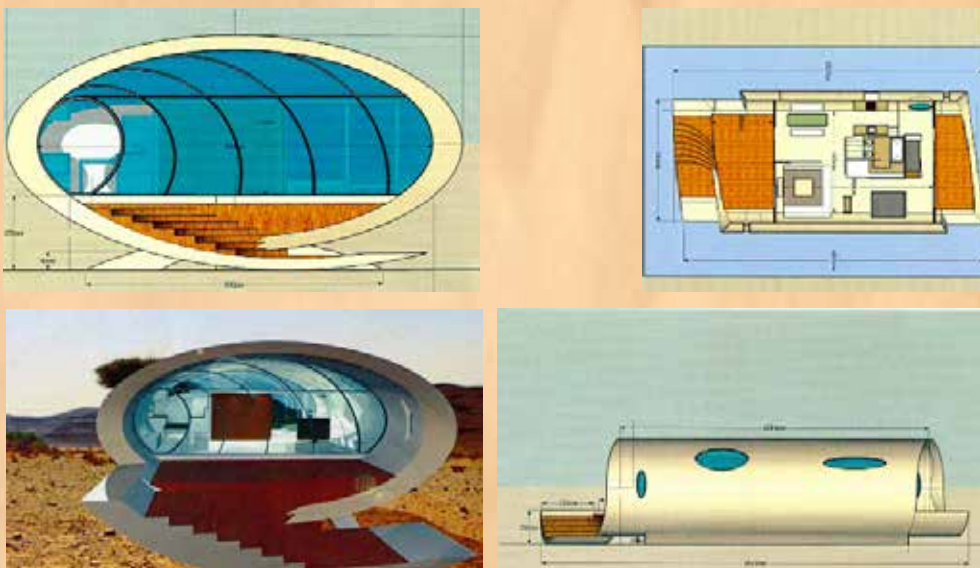
The Expandable Newood housing containers make it possible to create between two Newood Standard housing containers a “bridging” making it possible to triple the livable space of the same structure.



The Newood «Cabin» containers correspond to the same dimensions as the Newood Standard housing container but whose form is increased by longitudinal curved angles.



The Newood DeLuxe housing containers also correspond to the principle of an individual habitat longer than broad (tubular) but drawn freely by an architect or a designer : circular, oval, triangular section, hexagonal and bended tubes, etc



Concept, design and drawings by Luc Sebbanne, architect,
at Montpellier.

The containers are built uninterrupted and **divided with the length required by the customer**, then partitioned, equipped with doors and windows as well as full frontages or bay windows. All the containers are equipped with two beam-skis to be able to be, if necessary, drag in place.

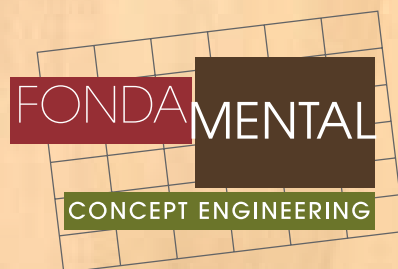
The external surface treatments can be realized with wood, synthetic resins, a hydraulic rough coat on netting or others. The interior treatments can be carried out with wood panels or plasterboard, etc. Roofs can be covered with steel plate, shingles and tiles etc.

Newood segment de tube ovale
Largeur 10 m
Hauteur 5 m



In the course of development :

The Newood Standard foldable housing container will make it possible to transport two folded containers for the volume of one unfolded container.



FONDAMENTAL - INGÉNIERIE DES CONCEPTS

38, rue Pierre Séward,
F - 34200 Sète.

Tél. : 33+(0)4 99 02 56 69 - GSM : 33+(0)6 84 78 52 66
[e] : willigenvw@gmail.com - www.fondamental.info